

Transport Construction Notes:

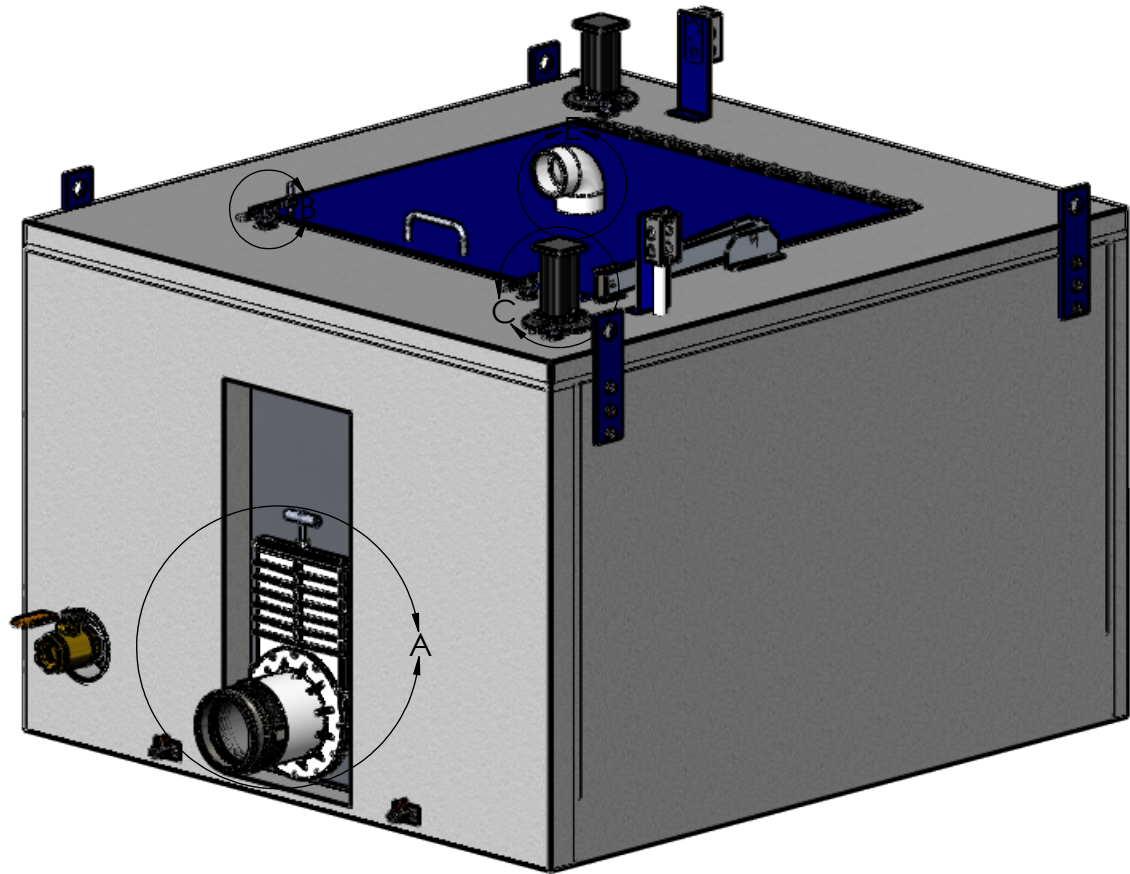
External Dimenions - 62"W x 44"H x 68"L

- Inner tank structure to be built out of 0.19" thick 5025-H32 Aluminum 2" Tank Insulation 2 lb. density EI Foam P200 or equal (7.9 Rs per in.)
- External Tank to be made of 0.125" thick FRP, with additional in corners and bottom for Reinforcment.
- Urethane clear coat over outer gelcoat layer for durability and ease of cleaning.
- 6" Round release outlet with external mount Valterra 6" Knife gate, mounted to Tank with precision machined Aluminum plate.
- O2 delivery system that includes
 - (2) 24" Point Four Systems microbubble diffuser.
 - Each diffuser stone is countersunk in tank bottom.
 - Stones have removable alum covers for maintenance and repair.
 - Countersunk pockets have drainline for pocket water drainage.
 - Green oxygen line
 - (2) Oxygen Flowmeter, (1) per stone.
 - (1) Oxygen Regulator
- (2) Model TT Fresh Flow Aerators.
 - Aerators have electrical wiring and internal conduit plumbing to JBox connection.
 - (1) Relay box with toggle switchs and indicator lights.
- (1) Ventilation scoop, SCH 40 PVC elbow with Alum perforated screening.
- (1) Access hatch 36" x 36" with 39" x 39" single hinge door.
 - Door has heavy duty Stainless Steel piano style hinge.
 - (1) Alum fabricated jack knife door lock hinge. Hinge holds door in open position to keep accidental closure from occuring.

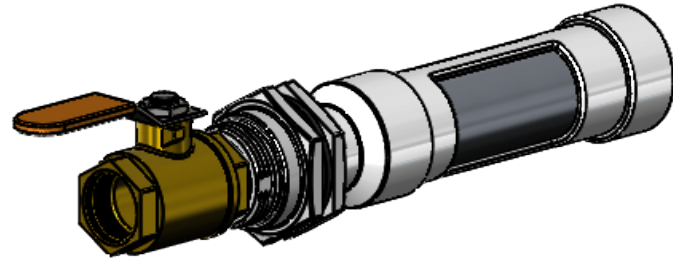
***Details NOT shown in submittal drawing include: electric conduit lines and wiring, Point Four oxygen stones and internal oxygen lines. (placement pocket and flush mount cover is shown)

External Valterra Gate Notes

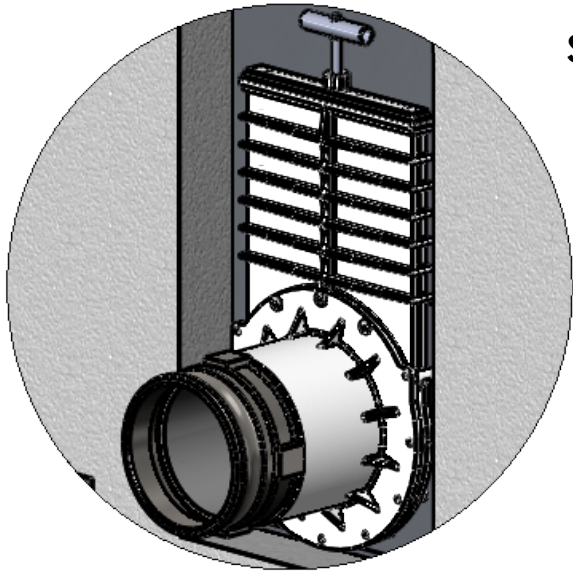
- Gate is double sealed with easily replacable seals.
- Gate is double flanged with full gate able to be removed easily for maintainence or repair.
- Gate seal when closed to be drip tight, and leak proof, when properly adjusted.
- Bolts for mounting of flanges to allow for seal tension adjustment.
- Outer removable flange has threaded pipe stub in slip flange for mounting threaded 6in. Female thread to Male camlock quick coupler.



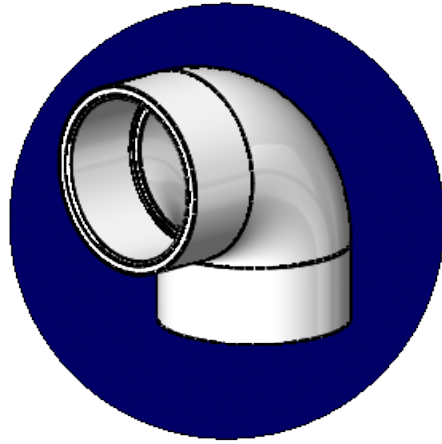
SCREENED TEMPERING VALVE DETAIL
SCALE 1: 6



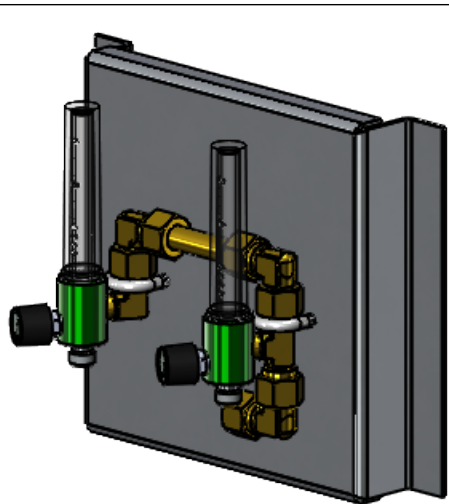
DETAIL B
SCALE 1 : 4



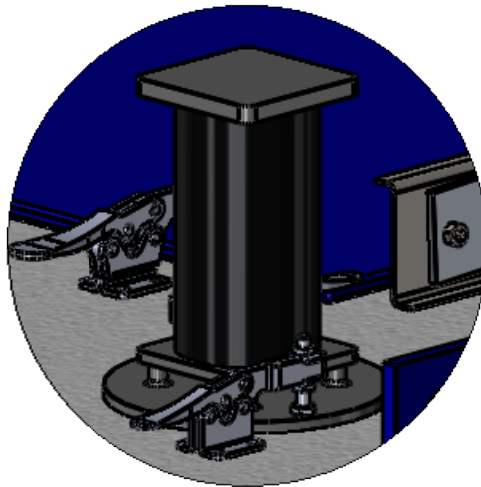
DETAIL A
SCALE 1 : 8



DETAIL E
SCALE 1 : 4

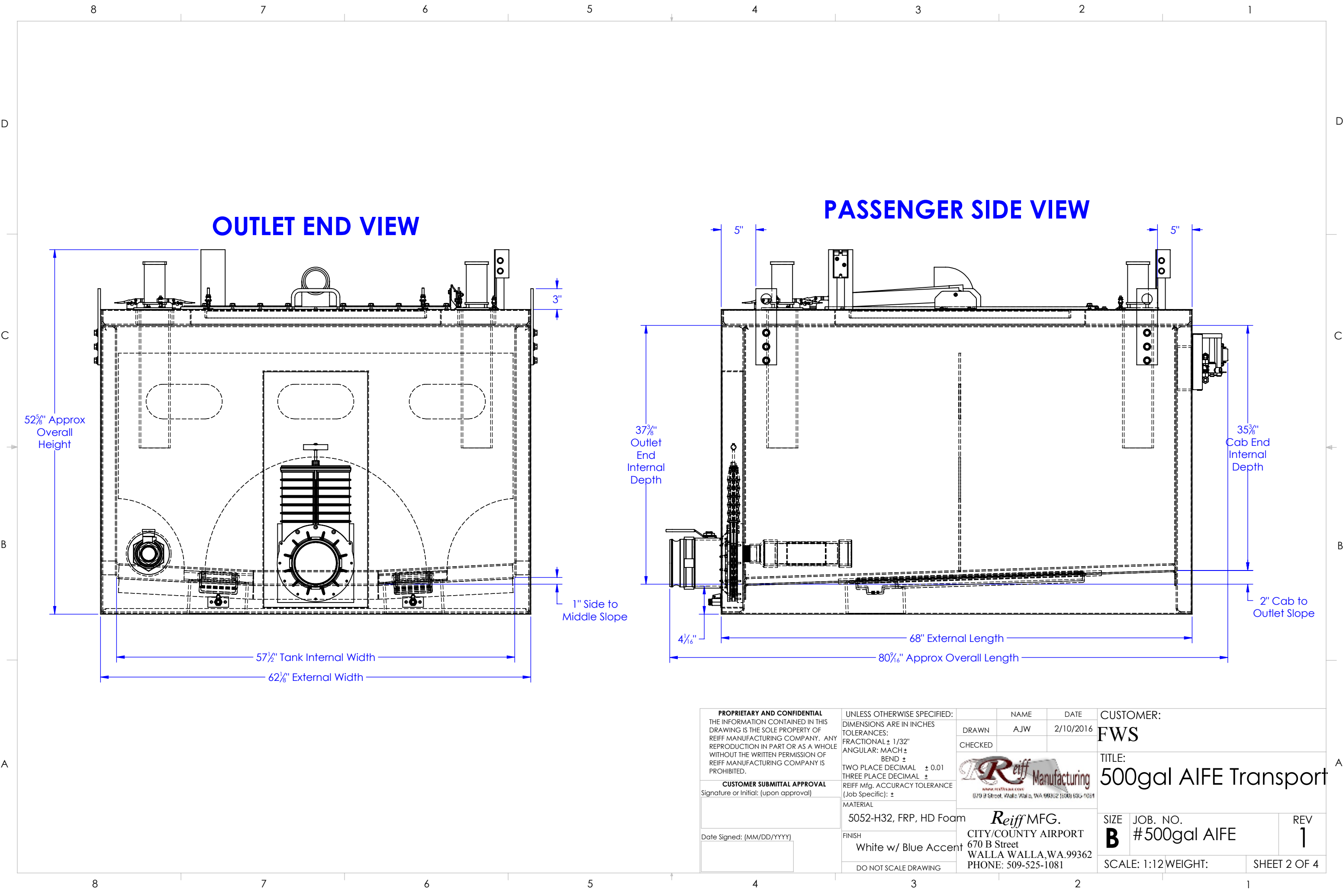


FLOWMETER DETAIL
SCALE 1 : 4

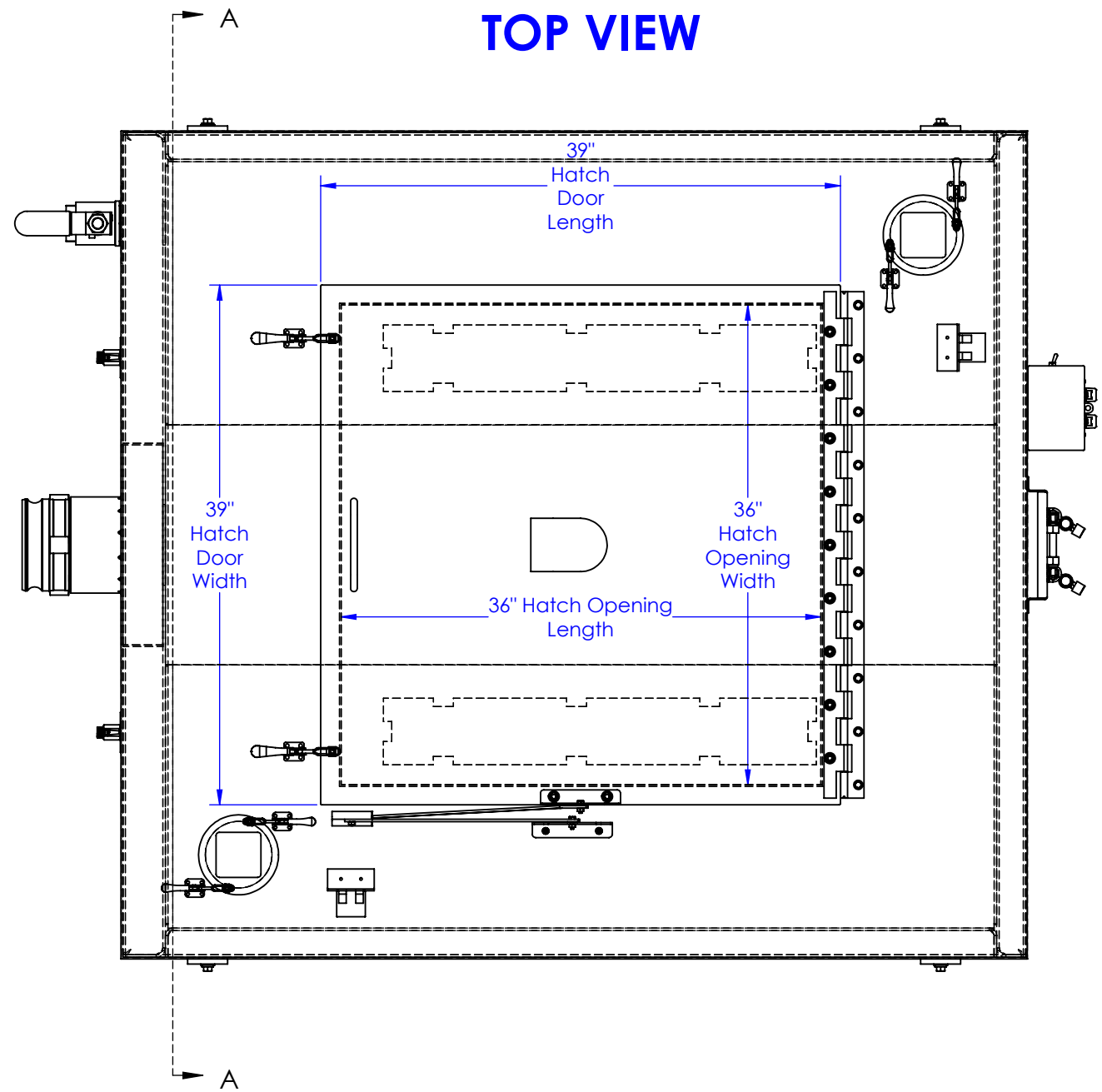
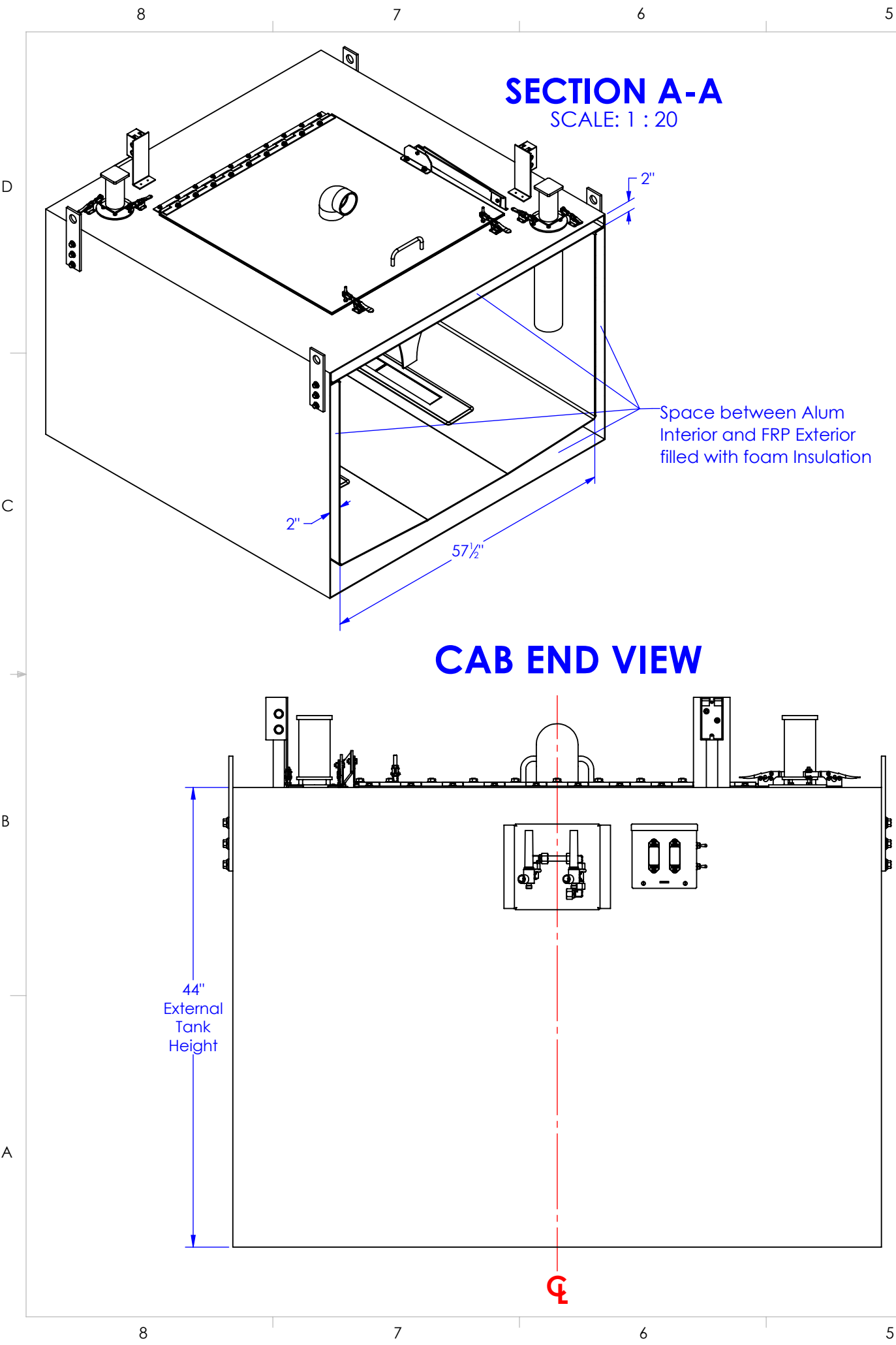


DETAIL C
SCALE 1 : 4

PROPRIETARY AND CONFIDENTIAL THE INFORMATION CONTAINED IN THIS DRAWING IS THE SOLE PROPERTY OF REIFF MANUFACTURING COMPANY. ANY REPRODUCTION IN PART OR AS A WHOLE WITHOUT THE WRITTEN PERMISSION OF REIFF MANUFACTURING COMPANY IS PROHIBITED.		UNLESS OTHERWISE SPECIFIED: DIMENSIONS ARE IN INCHES TOLERANCES: FRACTIONAL ± 1/32" ANGULAR: MACH ± BEND ± TWO PLACE DECIMAL ± 0.01 THREE PLACE DECIMAL ±		NAME	DATE	CUSTOMER:	
CUSTOMER SUBMITTAL APPROVAL Signature or Initial: (upon approval)		REIFF Mfg. ACCURACY TOLERANCE (Job Specific): ±		DRAWN	AJW	2/10/2016	FWS
Date Signed: (MM/DD/YYYY)		MATERIAL 5052-H32, FRP, HD Foam		CHECKED		TITLE:	
		FINISH White w/ Blue Accent		DO NOT SCALE DRAWING		500gal Transport	
		Reiff MFG. CITY/COUNTY AIRPORT 670 B Street WALLA WALLA, WA. 99362 PHONE: 509-525-1081		SIZE		JOB. NO.	REV
				B		#500gal AIFE	1
				SCALE: 1:16		WEIGHT:	SHEET 1 OF 4



PROPRIETARY AND CONFIDENTIAL THE INFORMATION CONTAINED IN THIS DRAWING IS THE SOLE PROPERTY OF REIFF MANUFACTURING COMPANY. ANY REPRODUCTION IN PART OR AS A WHOLE WITHOUT THE WRITTEN PERMISSION OF REIFF MANUFACTURING COMPANY IS PROHIBITED.		UNLESS OTHERWISE SPECIFIED: DIMENSIONS ARE IN INCHES TOLERANCES: FRACTIONAL ± 1/32" ANGULAR: MACH ± BEND ± TWO PLACE DECIMAL ± 0.01 THREE PLACE DECIMAL ± REIFF Mfg. ACCURACY TOLERANCE (Job Specific): ±		NAME	DATE	CUSTOMER:	
CUSTOMER SUBMITTAL APPROVAL Signature or Initial: (upon approval)		 www.reiffusa.com 670 B Street, Walla Walla, WA 99362 (509) 525-1081		DRAWN	AJW	2/10/2016	FWS
				CHECKED			
				 CITY/COUNTY AIRPORT 670 B Street WALLA WALLA, WA. 99362 PHONE: 509-525-1081			
Date Signed: (MM/DD/YYYY) <div></div>		MATERIAL 5052-H32, FRP, HD Foam		TITLE:			
		FINISH White w/ Blue Accent		500gal AIFE Transport			
		DO NOT SCALE DRAWING		SIZE	JOB. NO.	REV	
				B	#500gal AIFE	1	
				SCALE: 1:12 WEIGHT:		SHEET 2 OF 4	



PROPRIETARY AND CONFIDENTIAL THE INFORMATION CONTAINED IN THIS DRAWING IS THE SOLE PROPERTY OF REIFF MANUFACTURING COMPANY. ANY REPRODUCTION IN PART OR AS A WHOLE WITHOUT THE WRITTEN PERMISSION OF REIFF MANUFACTURING COMPANY IS PROHIBITED.		UNLESS OTHERWISE SPECIFIED: DIMENSIONS ARE IN INCHES TOLERANCES: FRACTIONAL ± 1/32" ANGULAR: MACH ± BEND ± TWO PLACE DECIMAL ± 0.01 THREE PLACE DECIMAL ± REIFF Mfg. ACCURACY TOLERANCE (Job Specific): ±		NAME	DATE	CUSTOMER:					
				DRAWN	AJW	2/10/2016	FWS				
				CHECKED							
CUSTOMER SUBMITTAL APPROVAL Signature or Initial: (upon approval)		MATERIAL 5052-H32, FRP, HD Foam					TITLE: 500gal AIFE Transport				
Date Signed: (MM/DD/YYYY)		FINISH White w/ Blue Accent		 CITY/COUNTY AIRPORT 670 B Street WALLA WALLA, WA. 99362 PHONE: 509-525-1081			SIZE	JOB. NO.		REV	
		DO NOT SCALE DRAWING					B	#500gal AIFE		1	
							SCALE: 1:12		WEIGHT:	SHEET 3 OF 4	

NOTE #	PART	QTY.	DESCRIPTION
1	500 gal Alum Interior Body Piece	1	Tank body made from 0.190" thick 5052-H32 fabricated Alum Sheet.
2	500 gal Alum Interior Ends	2	Tank body made from 0.190" thick 5052-H32 fabricated Alum Sheet.
3	500 gal Alum Interior Top	1	Tank body made from 0.190" thick 5052-H32 fabricated Alum Sheet.
4	500gal Alum Interior Baffle	1	Tank Baffles made from 0.190" thick 5052-H32 fabricated Alum Sheet. (removable)
5	Fiberglass Outer Shell	NA	White and clear gel coated, chop applicated 0.13" thick FRP laminate outer shell.
6	FRP Recessed O2 Stone Pocket	2	Pocket for recessing Pentair MBDC600 O2 diffuser stone
7	1/8" thick Alum O2 stone cover	2	Cover for recessed pocket, secures MBDC600 stone
8	8" PVC Recess O2 Stone Access Pipe	2	Pipe provides access to O2 line-diffuser stone connection
9	PVC passthroughs	4	Seals tank insulation from elements at passthroughs
10	39"x39" 1/4" thick Alum hatchway access door	1	Large access top doors w/ Alum angle frame to provide stiffness.
11	3" wide piano style 304SS hinge	1	36" long heavy duty hatch door piano style hinge.
12	Reiff Mfg. Open-Position-Lock Jackknife Hinge	1	Hinge is installed to hold door in open position and prevent injury due to accidental closing.
13	DeStaCo 225-USS horizontal toggle clamps	2	Toggle clamps secure top hatch door and seal gasket. (500lbs pressure/clamp)
14	Stainless or Alum 6.00" access door handle	1	For opening of tank hatches, mounted opposite of hinge edge O.C. of hatch door.
15	12 x 11.5 x 1" thick 6061-T6 Machined Alum Gate Mount Plate	1	Alum Plate precision machined for mounting of 6" Valterra gate, welded to outlet end of Alum Int.
16	6" Valterra ABS Knife Gate Body	1	Valterra's 6in. ABS manual operated gate valve body w/ Int. SS knife gate, replacable & servicable.
17	6" Valterra Gate Santoprene Seals	2	Knife gate seals, Int. and Ext. Provides user with simple service and adjustment of release valve.
18	6" SCH80 PVC threaded Nipple	1	Pipe stub installed in gate slip flange for FNPT to Camlock quick connect coupler.
19	6" FNPT-to-Male Camlock Coupler	1	Alum coupling for release outlet hose attachment
20	2in. Pipe Sz. PVC Bulkhead fitting	1	Bulkhead fitting for mount of Tempering or Dewatering valve, (large int. screened assembly shown Item#28)
21	2in. Pipe Sz. Brass Ball Valve FNPT	1	Ball Valves for operation of tempering, or dewatering valve.
22	3" Sz. SCH40 90° Elbow Vent	1	Screened vent elbow provides air circulation, tank O2 system over-pressurization prevention,
23	Model TT Fresh Flow Aerator	2	12 V powered aerator for tank water circulation.
24	DeStaCo 215-USS horizontal toggle clamps	4	2 Toggle clamps secure Model TT aerator in place provide simple removal. (250lbs pressure/clamp)
25	1/8" thick Alum Outlet Box formed Bracket Mount & Electric J Box	2	1 Bracket/Aerator w/ mounted Aerator plug-in electrical J-box.
26	Heavy Gauge 3/8" A36 Steel Tank Lift Brackets	4	Heavy duty brackets mounted w/ 3/8" HW in backing material for lifting of tank (WHILE EMPTY) .
27	Oxygen Flow Meter & Flowmeter mount	1	(4) Flow meters, (1) for every Diffuser stone, all mounted on an Alum bracket Secured in center of Cab end of tank.
28	Aerator Electrical Relay and J-Box	1	Electric Relay J-Box with aerator operation toggle switches and operation indicator lights. (1 for each aerator.)
Extra	Other Components not shown in Exploded Detail		El Foam insulation, O2 regulator, Plumbing for O2 delivery and recessed pocket drainage, Electical routing.

